

**Can you really save time and money by switching to KaiserSelect® Precision Rod?**



**LET'S  
DRILL  
DOWN...**

**Kaiser**Select®

***KAISER***  
***ALUMINUM***

See for yourself.  
It's called the...

**KaiserSelect<sup>®</sup>**  
**CHALLENGE**

We put our recipe-controlled  
**KaiserSelect<sup>®</sup> Precision Rods**  
to the ultimate test—going head-to-head  
against the competition in manufacturing  
facilities just like yours.

And the results are in...

Fishing Reels

Recently, a leading fishing equipment manufacturer was reeling from inconsistent anodize response and long cycle time due to stringy chips. Then they took the KaiserSelect<sup>®</sup> Challenge. We hooked them up with KaiserSelect<sup>®</sup> Ultra Precision Rod™, and as you can see from the dramatic results below, KaiserSelect<sup>®</sup> proved to be quite a catch.



Water Ski Tow Pylon

Not long ago, one of the world's leading manufacturers of high performance watercraft was rejecting up to 80% of their machined aluminum tow pylons due to unacceptably coarse grain patterns. Then they took the KaiserSelect<sup>®</sup> Challenge—and by switching to KaiserSelect<sup>®</sup> Ultra Precision Rod™ it was soon clear sailing with zero rejects, reduced cycle time and a significant cost saving. Now that's what we call High Performance.



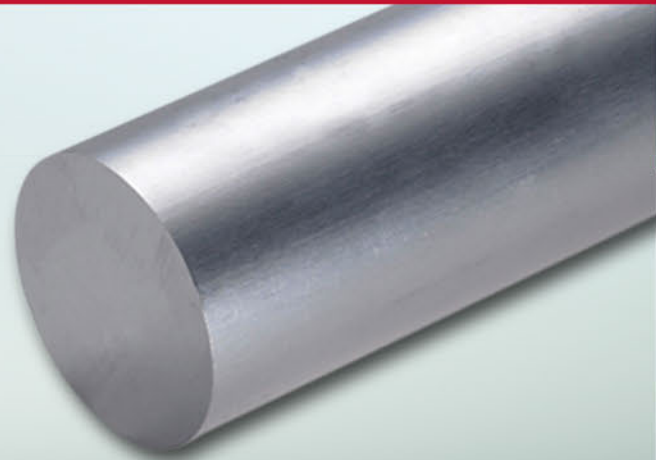
\*Each application and process is unique. Results obtained in Kaiser's trials may not be duplicated in all situations.

# KaiserSelect® PRECISION ROD

## KaiserSelect® Precision Rod 6061-T6511B

Available in diameters ranging from 0.75" up to 8.5"

- Recipe Process Control Manufacturing
- Consistent Machining Performance  
Lot-To-Lot and Piece-To-Piece
- Compact Chips Reduce Downtime
- Extremely Tight Tolerances
- Increased Mechanical Properties
- Enhanced Machined Surface



# KaiserSelect® ULTRA PRECISION ROD™

## KaiserSelect® Ultra Precision Rod™ 6061-T6511U

Available in diameters ranging from 1.25" up to 8.5"

Ultra Precision Rod™ has all of the above plus...

- Uniform Grain Consistency Throughout
- Even Higher Mechanical Properties
- Superior Anodize Response



So if you're ready to see a dramatic boost in productivity by reducing cycle time caused by stringy chips, poor machining surfaces or inconsistent anodize response, contact your distributor today to specify KaiserSelect® Precision Rod or KaiserSelect® Ultra Precision Rod™.

Visit us at  
[www.kaiseraluminum.com](http://www.kaiseraluminum.com)

**KAISER**  
ALUMINUM